

Exceed

Model 2600 GRINDER-BLOWER



OPERATOR'S MANUAL



Model 2600 Grinder-Blower
Operator's Manual

Exceed Manufacturing LLC
"Built to exceed your expectations"

102 Clubhouse Rd.
Woodbury PA 16695
Phone - (814) 766-2092
Email - leon@exceedmanufacturing.com

For your convenience we have provided this space for you to record your serial number and purchase date.

Serial Number

Purchase Date

WARNING!

CAUTION!

These symbols mean “ATTENTION!” “BECOME ALERT!” “YOUR SAFETY IS INVOLVED!” The message that follows the symbol contains important information regarding your safety. Carefully read the message. Make sure you fully understand the causes of possible injury or death.

IF THIS MACHINE IS USED BY AN EMPLOYEE, IS LOANED, OR IS RENTED, MAKE SURE THAT THE OPERATOR READS THE OPERATOR’S MANUAL AND UNDERSTANDS THE SAFE AND CORRECT USE OF THE MACHINE.

WARNING!

IMPROPER OPERATION OF THIS MACHINE CAN CAUSE INJURY OR DEATH!

BEFORE STARTING THE MACHINE:

1. READ THE OPERATOR’S MANUAL
2. READ ALL SAFETY DECALS ON THE MACHINE
3. CLEAR THE AREA OF BYSTANDERS
4. LEARN AND PRACTICE SAFE USE OF MACHINE CONTROLS IN A SAFE AND CLEAR AREA BEFORE YOU OPERATE THIS MACHINE ON A JOB SITE

It is your responsibility to observe pertinent laws and regulations and to follow manufacturer’s instructions on machine operation and maintenance.

For additional operator’s manuals or service questions contact Exceed Manufacturing LLC or your authorized dealer.

LIMITED WARRANTY FOR EXCEED MANUFACTURING LLC FARM MACHINERY

Notice: A Warranty Registration Form must be completed and returned to Exceed Manufacturing LLC or your authorized dealer to validate warranty.

A. General Provisions: Exceed Manufacturing LLC warrants the products it sells to be free from defects in material and workmanship for one year from the delivery date to the original purchaser. Exceed Manufacturing LLC obligation and liability under this limited warranty, is to repair or replace (at Exceed Manufacturing LLC option) any part (s) that upon manufacture were defective in material or workmanship. Warranty service shall be performed by Exceed Manufacturing LLC or an Exceed Manufacturing LLC authorized dealer and will be completed using Exceed Manufacturing LLC supplied parts. The original purchaser shall be responsible for service calls and transportation of the farm machinery to and from their dealer. The original purchaser is also responsible for any expedited repair charges (i.e., overtime and “next day air” deliveries) requested by the original purchaser. The original purchaser is also responsible for any repair service, parts, and labor on repairs made to the farm machinery at the time the warranty service was being performed.

B. Securing Warranty Service: The original purchaser must **(1)** contact their authorized dealer and report break-down. **(2)** The authorized dealer shall provide objective evidence of the farm machinery’s warranty status to Exceed Manufacturing LLC. **(3)** The original purchaser shall make the farm machinery available to their Exceed Manufacturing LLC authorized dealer within 30 days of the reported break-down. All parts or assemblies replaced under the limited warranty must be held for inspection for 90 days or until credit has been issued, or a claim has been returned to a dealer. When a claim is returned to a dealer with instructions to return and/or hold the part (s) for inspection, parts must be handled as instructed or the claim may be denied.

C. Spare Parts Warranty: Exceed Manufacturing LLC warrants that it will replace or repair (excluding labor) as Exceed Manufacturing LLC elects, without charge, any genuine spare part purchased from Exceed Manufacturing LLC which is defective in material or workmanship within 90 days of the date of installation. This warranty applies to parts that, in Exceed Manufacturing LLC judgment, prove to be defective in material or workmanship. All spare parts replaced under the spare parts warranty must be held for inspection for 90 days or until credit has been issued, or a claim has been returned to a dealer. When a claim is returned to a dealer with instructions to return and/or hold the part (s) for inspection, parts must be handled as instructed or the claim may be denied.

D. Limitations: Exceed Manufacturing LLC Limited Warranty does not extend to parts and elements not manufactured by Exceed Manufacturing LLC. Exceed Manufacturing LLC makes no other warranty expressed or implied and makes no warranty of merchantability or fitness for any particular purpose beyond that expressly stated in this warranty. Exceed Manufacturing LLC liability is limited to the terms set forth in this warranty and does not include any liability for direct, indirect, incidental, or consequential damages or expenses of delay. Exceed Manufacturing LLC liability is limited to the repair and replacement of defective parts as set forth herein. Any improper use and/or maintenance, including operation after the discovery of defective or worn parts, operation beyond the rated capacity, substitution of parts not approved by Exceed Manufacturing LLC, or any alteration or repair by others than the authorized Exceed Manufacturing LLC dealer which affects the product materially and adversely, shall void the warranty. No dealer, employee or representative is authorized to change this warranty in any way or grant any other warranty unless such change is made in writing and signed by an officer of Exceed Manufacturing LLC.

TO THE OWNER

TO THE OWNER

Congratulations on the purchase of your new Exceed Grinder-Blower. You have selected a top-quality machine that is designed and built to ensure you have many years of efficient and reliable service.

This manual is designed to provide you with important information regarding safety, maintenance, and machine operation so you can and will get the best possible performance from your Grinder-Blower. Even if you are an experienced operator of this or similar equipment, we ask that you read this manual before operating this Grinder-Blower. The way you operate, adjust, and maintain this unit will have much to do with its successful performance. Any further questions you may have about your Exceed 2600 Hammermill Blower should be directed to Exceed Manufacturing LLC.

SPECIFICATIONS AND DESIGN ARE SUBJECT TO CHANGE WITHOUT NOTICE

Exceed Manufacturing LLC is continually making product improvements. In doing so, we reserve the right to make changes and/or add improvements to our products without obligation for the equipment previously sold.

Modifications to this Grinder-Blower may affect the performance, function, and safety of its operation. Therefore, no modifications are to be made without the written permission of Exceed Manufacturing LLC. Any modification made without the written permission of Exceed Manufacturing LLC shall void the warranty of this product.

In the interest of continued safe operation of this Grinder-Blower, pay particular attention to the safety alert symbol(s) throughout this manual.

Exceed Manufacturing LLC recognizes its responsibility to provide customers with a safe and efficient product. We attempt to design and manufacture our products in accordance with all accepted engineering practices effective at the date of design. This statement should not be interpreted to mean that our products will protect against the user's own carelessness or failure to follow common safety practices nor will Exceed Manufacturing LLC be liable for any such act. In addition, Exceed Manufacturing LLC assumes no liability for any altered product or any modified product by users or anyone other than an authorized dealer.

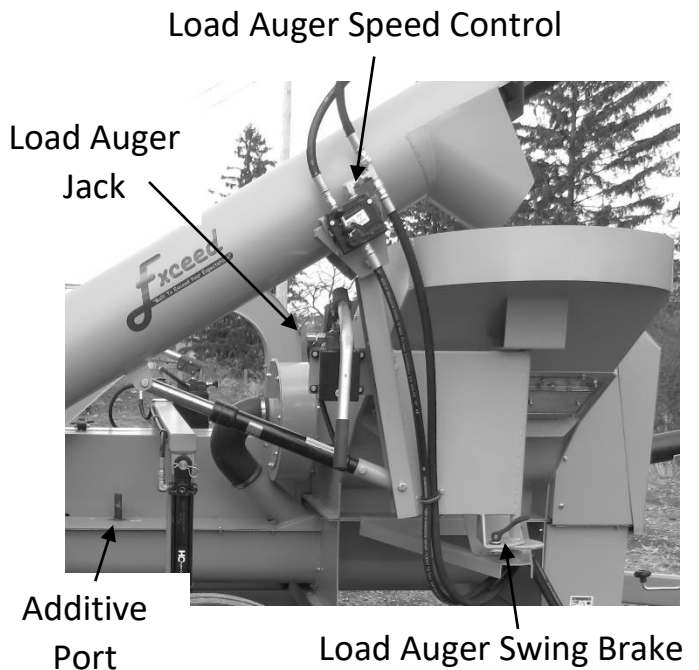
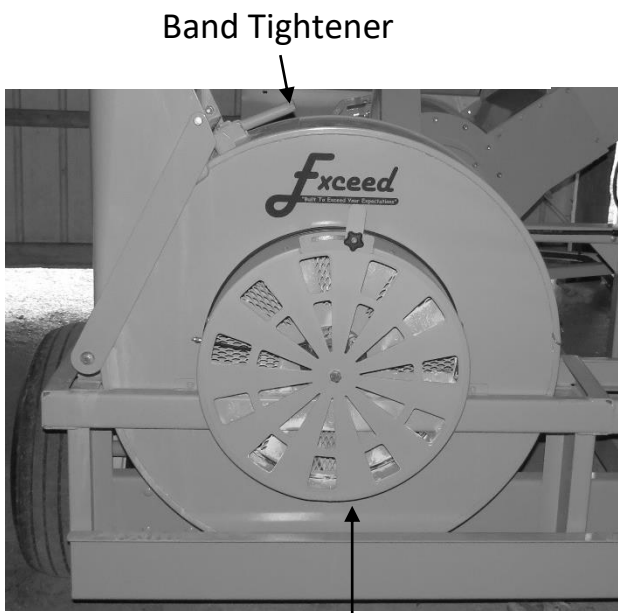
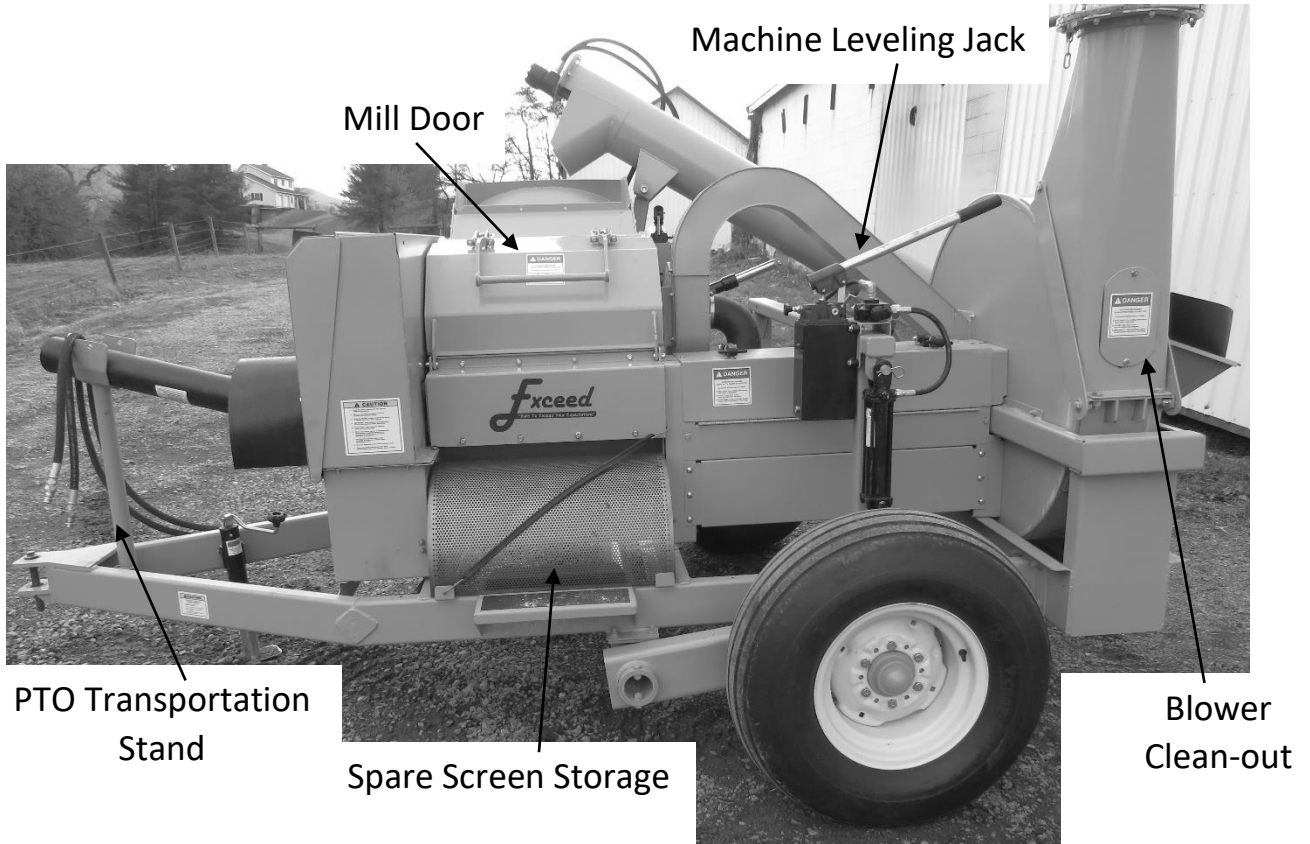
IMPORTANT WARRANTY INFORMATION

The warranty for this Hammermill Blower appears on page 4 of this manual. In order to establish proper warranty registration, the Warranty Registration Form must be completed and returned to Exceed Manufacturing LLC or your authorized dealer. Failure to comply with this requirement will result in invalidating the warranty.

LIMITATIONS OF THIS MANUAL

This manual contains operating instructions for your Exceed 2600 Grinder-Blower only. Any mention of other machinery in this manual other than your Exceed 2600 Grinder-Blower is for reference only. This manual does not replace nor is it to be used for any machinery that may be attached to or used in conjunction with the Exceed 2600 Grinder-Blower.

GETTING TO KNOW YOUR MACHINE



SAFETY INSTRUCTIONS

GENERAL

Most work-related accidents are caused by failure to observe basic safety rules or precautions. An accident can often be avoided by recognizing potentially hazardous situations before an accident occurs. As you operate and maintain the Hammermill Blower you must be alert to potential hazards. You should also have the necessary training, skills, and tools to perform any assembly or service procedure.

Improper operation and/or maintenance of this unit could cause a dangerous situation that results in injury or death.

Do not use this unit until you read and understand the information contained in this manual. Do not use this unit for anything other than its intended purpose.

Safety precautions and warnings are provided in this manual and on the unit. If these hazard warnings are not heeded, bodily injury or death could occur to you or to other persons.

Exceed Manufacturing LLC cannot anticipate every possible circumstance that might involve a potential hazard. The warnings in this manual and on the product are, therefore, not all-inclusive. If a method of operation not specifically recommended by us is used, you must satisfy yourself that it is safe for you and for others. You should also ensure that the unit will not be damaged or be made unsafe by the methods that you choose.

The information, specifications, and illustrations in this manual are based on the information that was available at the time this material was written and can change at any time.

This manual contains "WARNINGS", "CAUTIONS", "ATTENTIONS", and "SAFETY INSTRUCTIONS" which must be followed to prevent the possibility of improper service, damage to the equipment, personal injury, or death.

SAFETY INSTRUCTIONS

"A careful operator is the best insurance against an accident." Quote from the National Safety Council.

Most accidents can be prevented if the operator:

1. Fully understands how the machine functions.
2. Can anticipate situations which may produce problems.
3. Can make necessary corrections before a problem develops.

Exceed Manufacturing LLC strives to make our equipment as safe as possible. A safety conscious equipment operator makes an effective accident-prevention program complete.

Safety features and instructions for the Grinder-Blower are detailed in this operator's manual. It is the responsibility of the owner to ensure that all operators read and understand the manual before they are allowed to operate the Grinder-Blower.

BEFORE OPERATING

SAFETY INSTRUCTIONS

Do not wear loose-fitting clothing as it may catch in moving parts.

Make sure all guards and shields are installed, including the tractor power take-off (PTO) master shield, before starting or operating the Grinder-Blower.

Be sure that the correct implement driveline parts are used and that they are properly secured.

Lower the leveling jacks when the machine is not in use.

Install a safety chain when attaching the Grinder-Blower to the tractor.

Clear the area of any bystanders, especially children, when making repairs, adjustments, or performing maintenance on the Grinder-Blower.

Do not allow riders.

Put all machine controls in “neutral” and disengage the PTO before starting the tractor. Follow starting instructions according to the OEM tractor manual.

Operate the Grinder-Blower only while seated on the tractor seat.

Make sure the unit is adequately supported with safety blocks or safety stands when changing tires or performing maintenance.

DURING OPERATION

CAUTION!

ENTANGLEMENT HAZARD! KEEP HANDS, FEET, HAIR, AND CLOTHING AWAY FROM MOVING PARTS. WAIT FOR ALL MOVEMENT TO STOP BEFORE APPROACHING UNIT.

Before making adjustments:

1. Shut off the tractor
2. Set parking brake
3. Put machine in neutral
4. Remove key while making adjustments

Keep all shields and guards in place and in good working condition.

Keep all bystanders, especially children, away from the Grinder-Blower while in operation.

Do not allow riders while the Grinder-Blower is in operation.

Do not attempt to unclog, clean, or adjust the Grinder-Blower while it is running.

Stay away from overhead power lines. Electrocutation can occur without direct contact.

Keep all hydraulic lines, fittings, and couplers tight and free of leaks.

Use caution when ascending or descending on the Grinder-Blower.

SAFETY INSTRUCTIONS

MAINTENANCE SAFETY

SAFETY INSTRUCTIONS

Before servicing, adjusting, repairing, or unclogging the machine, always make sure the tractor engine is stopped, key in your pocket, parking brake is set, all machine controls are placed in “neutral”, all moving parts have stopped, and the machine is lowered to the ground.

Use sufficient tools, jacks, and hoists that have the capacity for the job.

Use support blocks or safety stands when changing tires or performing maintenance.

Follow good shop practices of keeping the service area clean and dry, and use adequate lighting.

Before applying pressure to the hydraulic system, make sure all lines, fittings, and couplers are tightly secured and in good condition.

HYDRAULIC SAFETY

SAFETY INSTRUCTIONS

Make sure components in the hydraulic system are kept clean and in good working condition.

Relieve pressure from the hydraulic system before servicing or disconnecting from the tractor.

Keep all hydraulic lines, fittings, and couplers tightly secured and free of leaks.

Replace any worn, cut, abraded, flattened, or crimped hoses.

Do not make any temporary repairs to the hydraulic lines, fittings, or hoses using tape, clamps, or

cement. The hydraulic system operates under extremely high pressure and temporary repairs may fail suddenly and create a dangerous situation.

Wear proper hand and eye protection when searching for a high-pressure hydraulic leak. Use a piece of wood or cardboard as a backstop instead of hands to identify and isolate a leak. If injured by a concentrated high-pressure stream of hydraulic fluid, seek medical attention immediately. Serious infection or toxic reaction can develop if hydraulic fluid penetrates the surface of the skin.

Before applying pressure to the system, make sure all components are tight and that the hydraulic lines, hoses, and couplings are not damaged.

TRANSPORTATION SAFETY

SAFETY INSTRUCTIONS

Make sure the Hammermill Blower complies with all local regulations regarding transporting equipment on public roads and highways.

Make sure the Slow-Moving Vehicle (SMV) emblem and all lights and reflectors required by local highway and transportation authorities are properly in place, clean, and clearly visible to traffic.

Do not allow riders on machinery during transport.

Make sure the Grinder-Blower is securely attached to the tractor and install a safety chain to the Hammermill Blower.

Do not exceed 20 MPH when transporting the Grinder-Blower. Always reduce speed on rough roads and surfaces, or when going down inclines.

The weight of the trailed machine should NEVER exceed the weight of the towing machine.

Check all clearances carefully whenever the machine is towed.

Stay away from overhead obstructions and power lines during transport. Electrocution can occur without direct contact.

STORAGE SAFETY

SAFETY INSTRUCTIONS

Store Grinder-Blower in an area away from human activity.

Do not permit children to play on or around the stored machine at any time.

Make sure that the Grinder-Blower is stored in an area with a firm and level base to prevent the machine from tipping or sinking into the ground.

Block the wheels to prevent machine from rolling.

TIRE SAFETY

SAFETY INSTRUCTIONS

Have only a qualified tire dealer or tire repair service perform tire repairs.

Do not attempt to install a tire on a wheel or rim unless you have the proper equipment and experience to do the job.

Do not substitute tires with a lesser road rating and/or capacity for the original equipment tires.

WARNING!

EXPLOSIVE FORCE HAZARD! TIRE REPLACEMENT, REPAIR, AND/OR MAINTENANCE SHOULD BE DONE BY A QUALIFIED TIRE DEALER OR QUALIFIED REPAIR SERVICE.

Failure to follow proper procedures when installing a tire on a wheel or rim can produce an explosive force that will result in serious injury or death.

Do not attempt to install a tire without proper equipment and experience to perform the job.

SETTING UP YOUR MACHINE

ATTACHING GRINDER-BLOWER TO TRACTOR

Adjust tractor draw-bar height to keep Grinder-Blower PTO as close to straight as possible.

Adjust Grinder-Blower height to match draw-bar height to keep machine level.

Secure hitch pin with safety clip as the vibrations from the machine may cause pin to vibrate out.

When connecting PTO, be sure to lower PTO transportation stand to avoid PTO jamming.

ATTENTION!

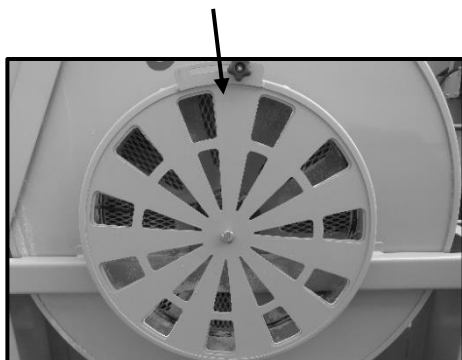
TRACTOR HYDRAULICS SHOULD BE SLOWED DOWN SO LOAD AUGER SPEED CONTROL CAN BE COMPLETELY OPEN WHILE IN OPERATION.

Restricting hydraulic flow with load auger speed control over long periods of time can cause hydraulic fluid to heat.

BLOWER SET-UP FOR SILO

ATTENTION!

BLOWER AIR INTAKE MUST BE COMPLETELY OPEN WHEN BLOWING INTO A SILO.

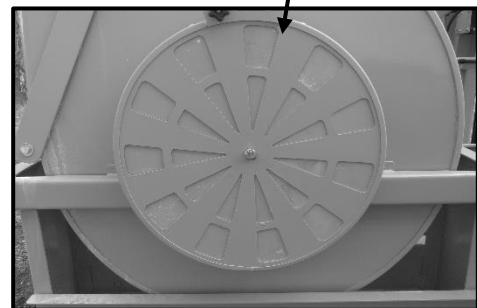


Blower must be directly under silo fill-pipe. Position blower so silo fill-pipe is completely straight from where it attaches to the blower, to the top of the silo. Any bends or dents in silo fill-pipe can lower capacity and cause plugging. If an elbow is needed, use a large radius and install as close to discharge end as possible. Sharp bends and flexible elbows can lower capacity and cause plugging. Make sure silo fill-pipe is securely fastened to blower outlet. Grinder-Blower leveling jacks can be used to ensure blower outlet is parallel to silo fill-pipe. This means the Grinder-Blower should be nearly level from front to back and from side to side. Tractor should be in straight line with machine to avoid stress on PTO.

BLOWER SET-UP FOR GOOSENECK

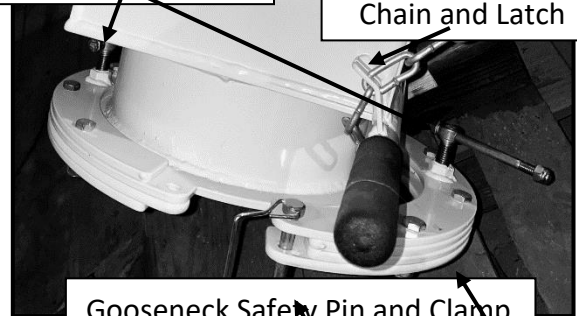
ATTENTION!

BLOWER AIR INTAKE MUST BE COMPLETELY CLOSED WHEN BLOWING WITH A GOOSENECK.



Gooseneck Brakes

Spout Adjustment Chain and Latch



Gooseneck Safety Pin and Clamp

Set gooseneck on top of blower outlet and close clamp. **Make sure safety pin is installed and latched.** Grease may be applied to top of blower outlet before setting gooseneck on to make adjustment easier after installation.

Turn gooseneck to wherever desired and set brakes.

If using spout, adjust distance with chain and latch.

LOAD AUGER SET-UP

Unfasten load auger and use load auger jack to raise load auger out of transportation rest.

Swing load auger to desired position and set swing brake.

Before putting feed in auger, rest auger on ground or solid blocks to avoid stress on auger and mill.

CHANGING SCREENS

WARNING!

ROTATING PARTS INSIDE MILL DOOR. BEFORE OPENING MILL DOOR, DISENGAGE ALL MACHINE DRIVES, SHUT OFF TRACTOR ENGINE, AND REMOVE TRACTOR KEY. WAIT FOR ALL MOTION TO STOP BEFORE APPROACHING MACHINE.

Open mill door and pull back screen support to remove or install screens.

Extra screens can be stored under mill.

STARTING THE GRINDER-BLOWER

Tractor PTO RPM must be set to 1,000 RPM. To start the Grinder-Blower, set the tractor engine speed to idle and engage PTO slowly. Increase tractor engine speed steadily until 1,000 PTO RPM is reached.

Start hydraulics to operate load auger.

ATTENTION!

TRACTOR HYDRAULICS SHOULD BE SLOWED DOWN SO LOAD AUGER SPEED CONTROL CAN BE COMPLETELY OPEN WHILE IN OPERATION.

Restricting hydraulic flow with load auger speed control over long periods of time can cause hydraulic fluid to heat.

An additive port is provided for applying additives while blowing.

SERVICING YOUR MACHINE

LUBRICATION

Machine should be greased every 8 hours of operation. Each grease point is shown for your convenience.

Main PTO (Front)



Main PTO (Back)



Mill Bearing (Front)



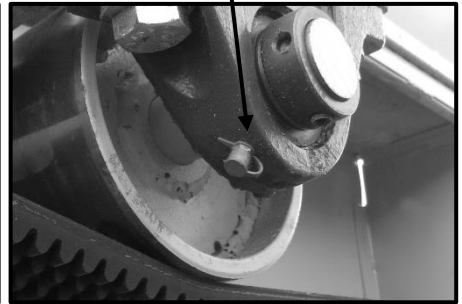
Main Belt Tensioner Pivot



Main Belt Idler (Back)



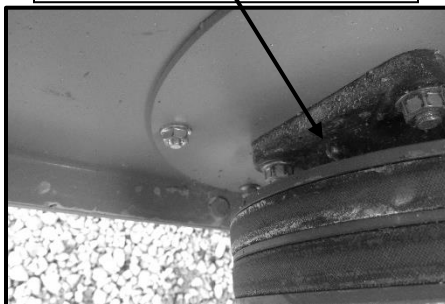
Main Belt Idler (Front)



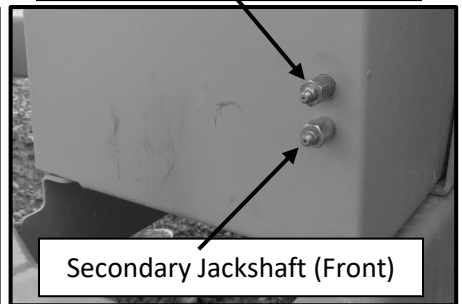
Main Jackshaft (Front)



Transfer Auger



Auger Belt Tensioner Pivot



Secondary Jackshaft (Front)

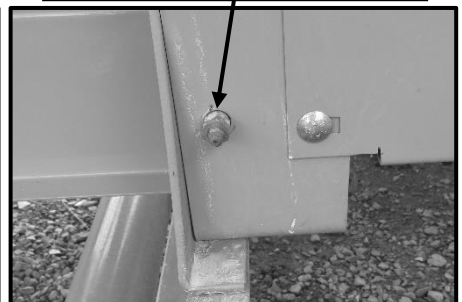
Axle Pivot (Left)



Main Jackshaft (Back)



Secondary Jackshaft (Back)



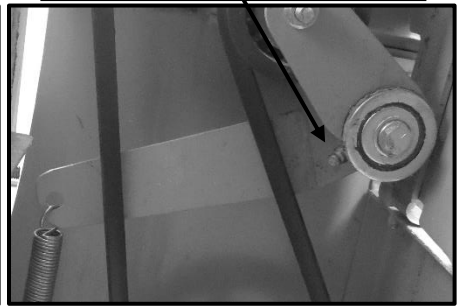
Blower PTO (Front)



Blower PTO (Back)



Secondary Jackshaft Belt Tensioner Pivot



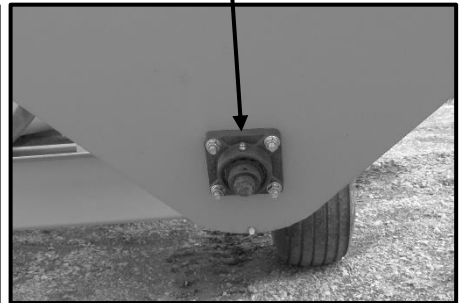
Blower (Front)



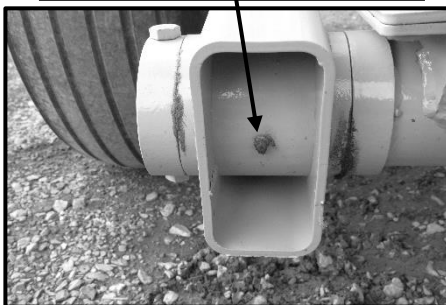
Blower (Back)



Load Auger



Axle Pivot (Right)



Mill Bearing (Back)



HAMMERMILL SERVICE

WARNING!

ROTATING PARTS IN HAMMERMILL CAN CAUSE SERIOUS INJURY AND DEATH. NEVER ATTEMPT TO OPEN MILL DOOR BEFORE TURNING OFF POWER SUPPLY AND WAITING FOR ALL MOVEMENT TO STOP.

Hammers should be checked periodically for excessive wear or damage. If hammers need to be replaced, always replace in pairs opposite each other (180 degrees apart) to maintain proper rotor balance. Worn hammers may be rotated a total of four times to introduce a new cutting edge. When rotating hammers, install hammers in the same order as removed to maintain balance as wear may be different on different hammers. See page 28 for proper hammer/spacer placement.

BLOWER SERVICE

WARNING!

ROTATING PARTS IN BLOWER CAN CAUSE SERIOUS INJURY OR DEATH. NEVER ATTEMPT TO CLEAN OUT A PLUGGED BLOWER BEFORE TURNING OFF POWER SUPPLY AND WAITING FOR ALL MOVEMENT TO STOP.

ATTENTION!

NEVER LOOSEN OR REMOVE BAND OR OUTLET WITHOUT CLEANING BAND GROOVE AND APPLYING FRESH SEALANT!

Loosening or removing the band or outlet will break the seal causing unneeded dust from blower and inefficient blowing.

If blower plugs, it can be cleaned out from blower clean-out cover or folding blower outlet up by removing two bolts as shown.



Remove

Loosen



CAUTION!

WHEN BLOWER OUTLET IS REMOVED FOR SERVICING, A PINCH POINT IS CREATED BETWEEN PADDLES AND ENDS OF BLOWER BAND. WEAR GLOVES AND USE CAUTION WHEN TURNING BLOWER.

Blower paddle clearance should be as close as possible to band at outlet. To adjust paddle clearance, loosen three paddle bolts and move paddle out till it touches band but still allows blower to turn. Retighten bolts to approximately 170 FT/LB, then use a power grinder to grind end of paddle till no rubbing is heard. You may have to run the machine and then grind more as the speed of the blower causes paddles to settle in place. Blower drive PTO can be removed while servicing so blower can be turned easily.

ATTENTION!

NEVER START BLOWER WITHOUT COMPLETELY TIGHTENING ALL BLOWER PADDLES FIRST. THE SPEED OF THE BLOWER CAUSES EXTREME OUTWARD FORCE ON THE PADDLES CAUSING THEM TO SLIDE OUT AND HIT BLOWER BAND IF NOT TIGHTENED PROPERLY.

To reseal the blower band if it is removed, carefully clean out the groove in the band where the blower sides seat. Any dirt or feed left in the groove can keep the band from sealing properly. **Use only 100% silicone to reseal the band, as other sealants cannot endure the vibrations as well.** Band should be tightened to approximately 95 FT/LB of torque. Make sure blower sides are completely seated in band groove all the way around.

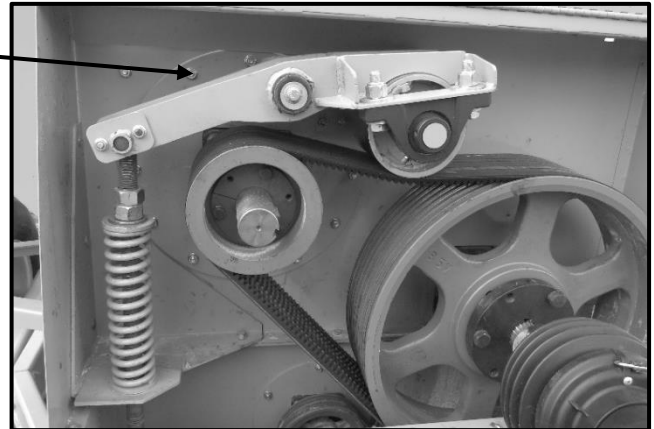
SERVICING YOUR MACHINE

BELT TENSIONERS

Belts should be checked for wear, cracks, fraying, and proper tension every 10 hours of operation. Worn or damaged belts should be replaced immediately. Weak tensioner springs should be replaced or tightened if an adjustment bolt is provided.

Main Belt Tensioner

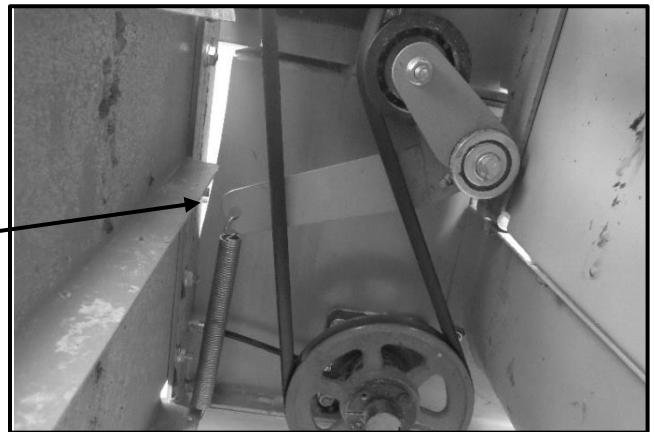
Main belt tension can be adjusted by moving nut up or down. Tension should be approximately 15LB when belt is lifted 1/4".



Transfer Auger Belt Tensioner

Transfer auger belt tension can be adjusted slightly with adjuster bolts.

Secondary Jackshaft Belt Tensioner

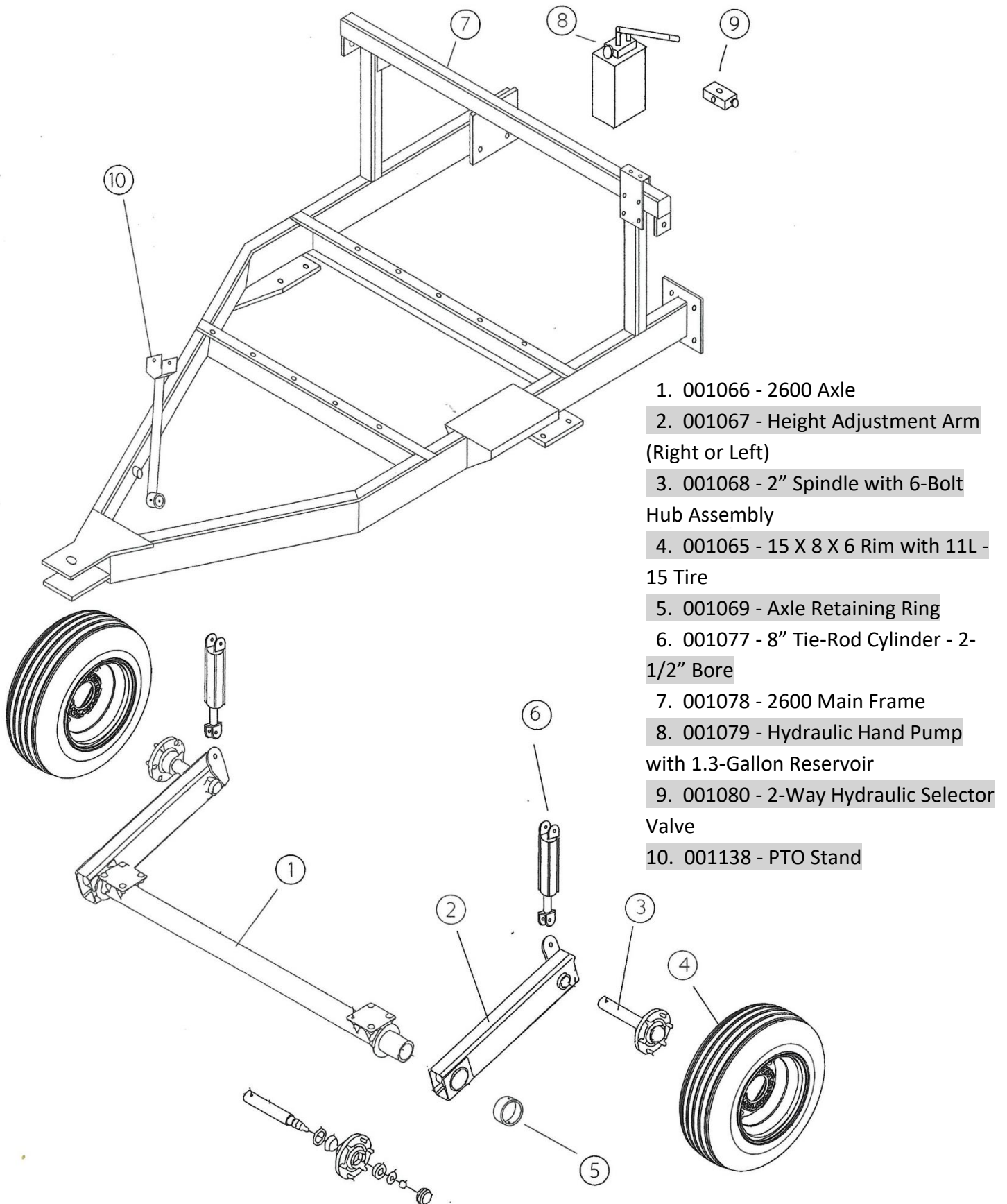


SHEAR BOLTS



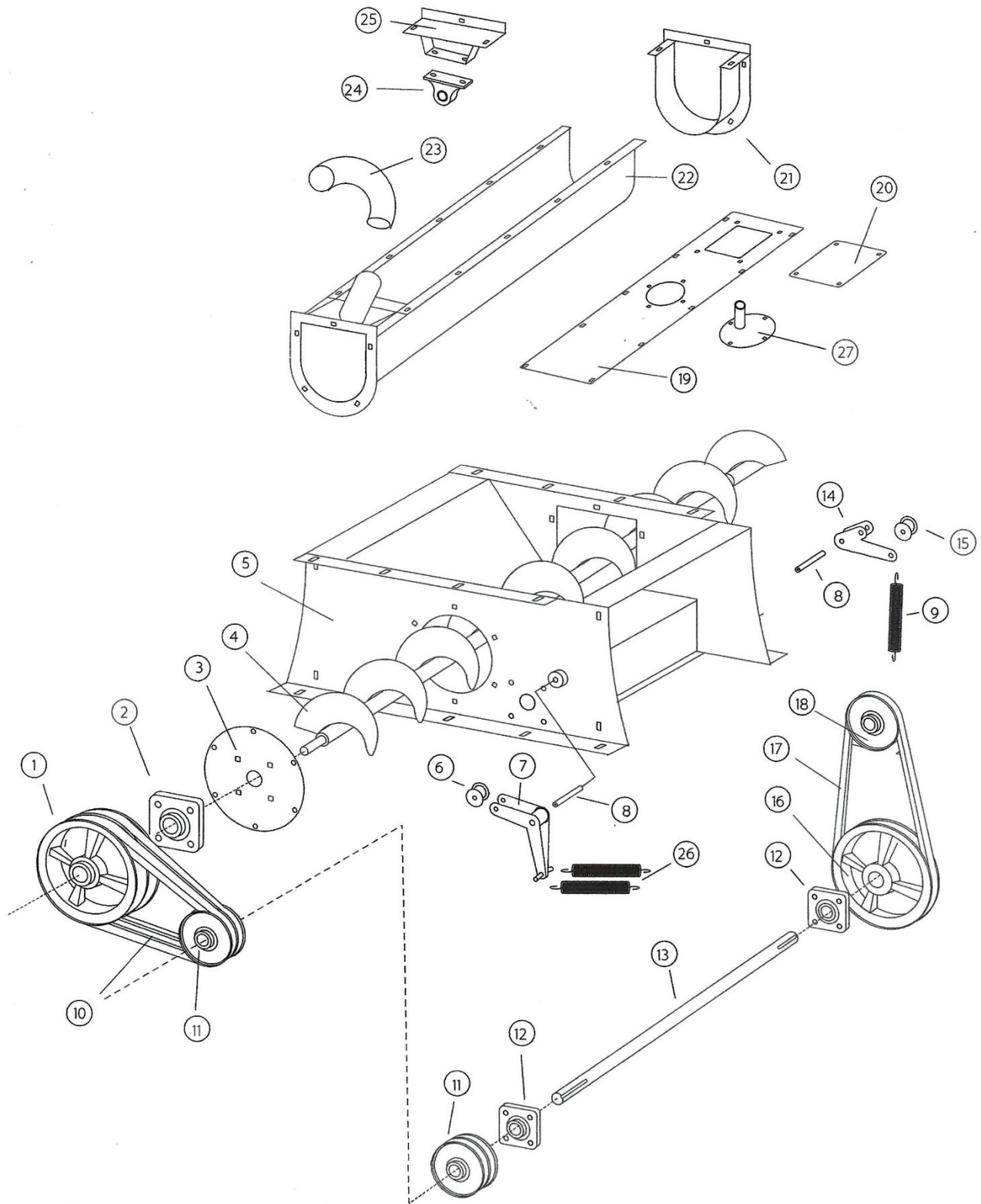
The blower is protected with a shear bolt in the blower drive PTO. If sheared, turn off the machine immediately and determine the cause of the shear. Shear bolts must always be replaced with same grade bolts. Always clean out blower before attempting to restart.

ILLUSTRATED PARTS LIST - FRAME



1. 001066 - 2600 Axle
2. 001067 - Height Adjustment Arm (Right or Left)
3. 001068 - 2" Spindle with 6-Bolt Hub Assembly
4. 001065 - 15 X 8 X 6 Rim with 11L - 15 Tire
5. 001069 - Axle Retaining Ring
6. 001077 - 8" Tie-Rod Cylinder - 2-1/2" Bore
7. 001078 - 2600 Main Frame
8. 001079 - Hydraulic Hand Pump with 1.3-Gallon Reservoir
9. 001080 - 2-Way Hydraulic Selector Valve
10. 001138 - PTO Stand

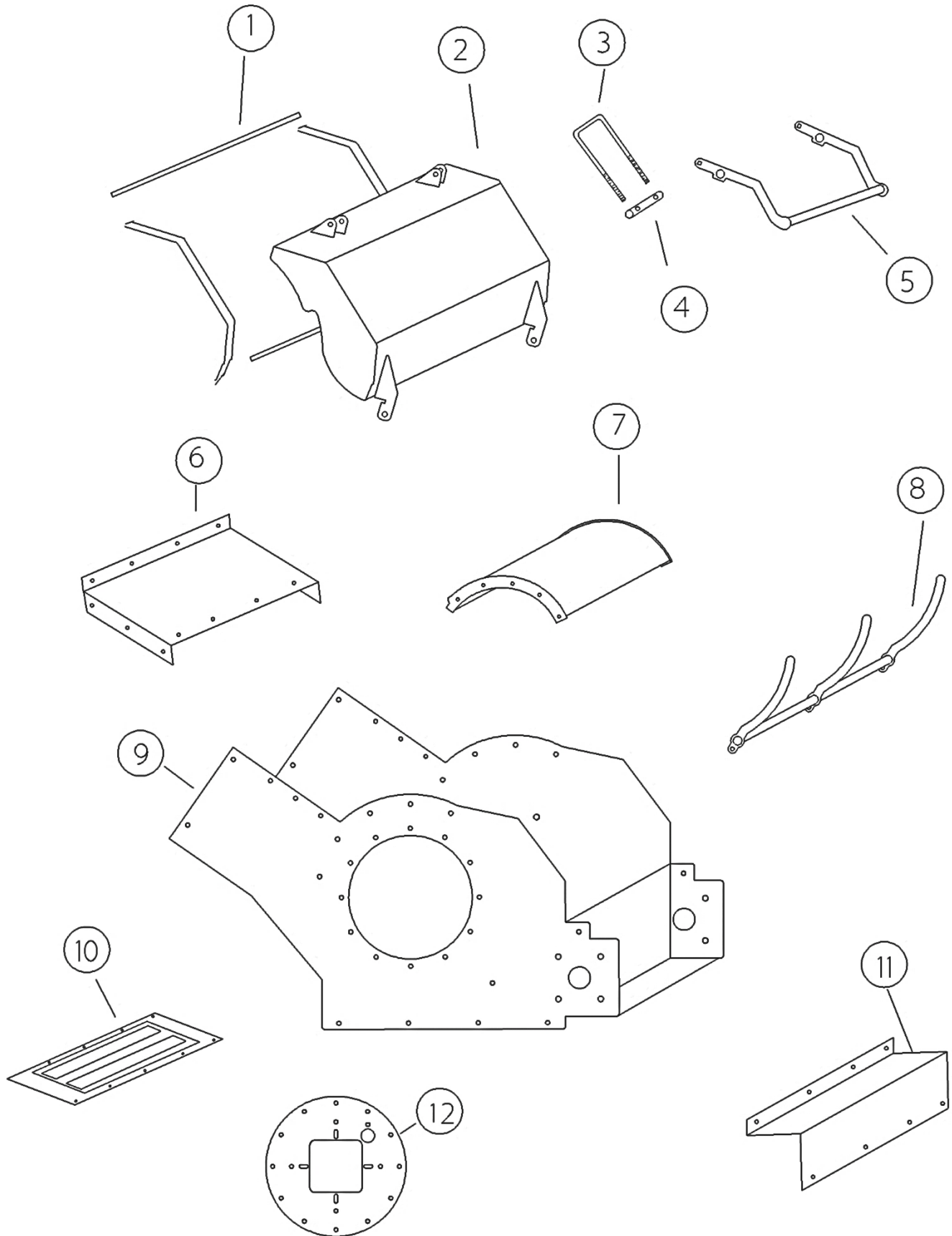
ILLUSTRATED PARTS LIST - HAMMERMILL BASE



ILLUSTRATED PARTS LIST - HAMMERMILL BASE

1. 001145 - 2BK70H Pulley with 1-1/4" H Pulley Bushing
2. 001146 - 1-1/4" KML 4-Bolt Flange Bearing with Lock Collar
3. 001116 - Transfer Auger Bearing Front Mount
4. 001147 - Transfer Auger
5. 001117 - Mill Base
6. 001148 - Idler Pulley
7. 001118 - Auger Belt Tensioner
8. 001149 - Tightener Pivot Pin
9. 001150 - 7/8" X 6" X 0.091" Spring
10. 001158 - B30 Belt (2 Required)
11. 001151 - 2BK45H Pulley with 1-1/4" H Pulley Bushing
12. 001146 - 1-1/4" KML 4-Bolt Flange Bearing with Lock Collar
13. 001152 - Secondary Jackshaft
14. 001119 - Secondary Jackshaft Belt Tensioner
15. 001159 - Single Idler Pulley
16. 001154 - BK70H Pulley with 1-1/4" H Pulley Bushing
17. 001157 - B46 Belt
18. 001155 - 1TB38 Pulley with 1-3/4" P1 Pulley Bushing
19. 001123 - Auger Trough Cover
20. 001120 - Additive Port Cover
21. 001122 - Auger Trough Adapter
22. 001124 - Transfer Auger Trough
23. 001156 - 4" Silicone 135-Degree Elbow
24. 001153 - 1" Pobco Wooden Pillow Block Bearing
25. 001121 - Transfer Auger Rear Bearing Mount
26. 001166 - 7/8" X 8-1/2" X 0.105" Spring

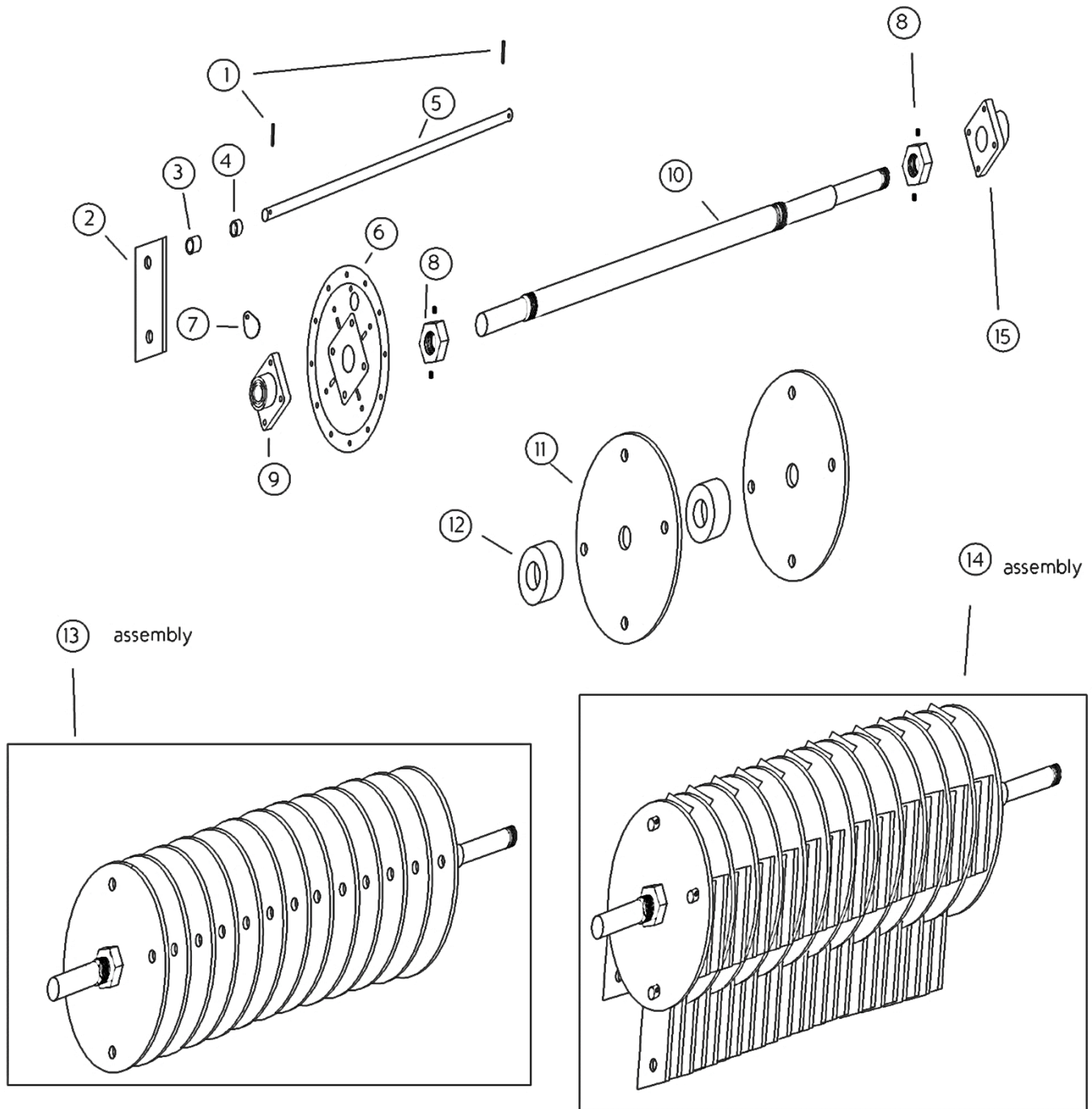
ILLUSTRATED PARTS LIST - HAMMERMILL



ILLUSTRATED PARTS LIST - HAMMERMILL

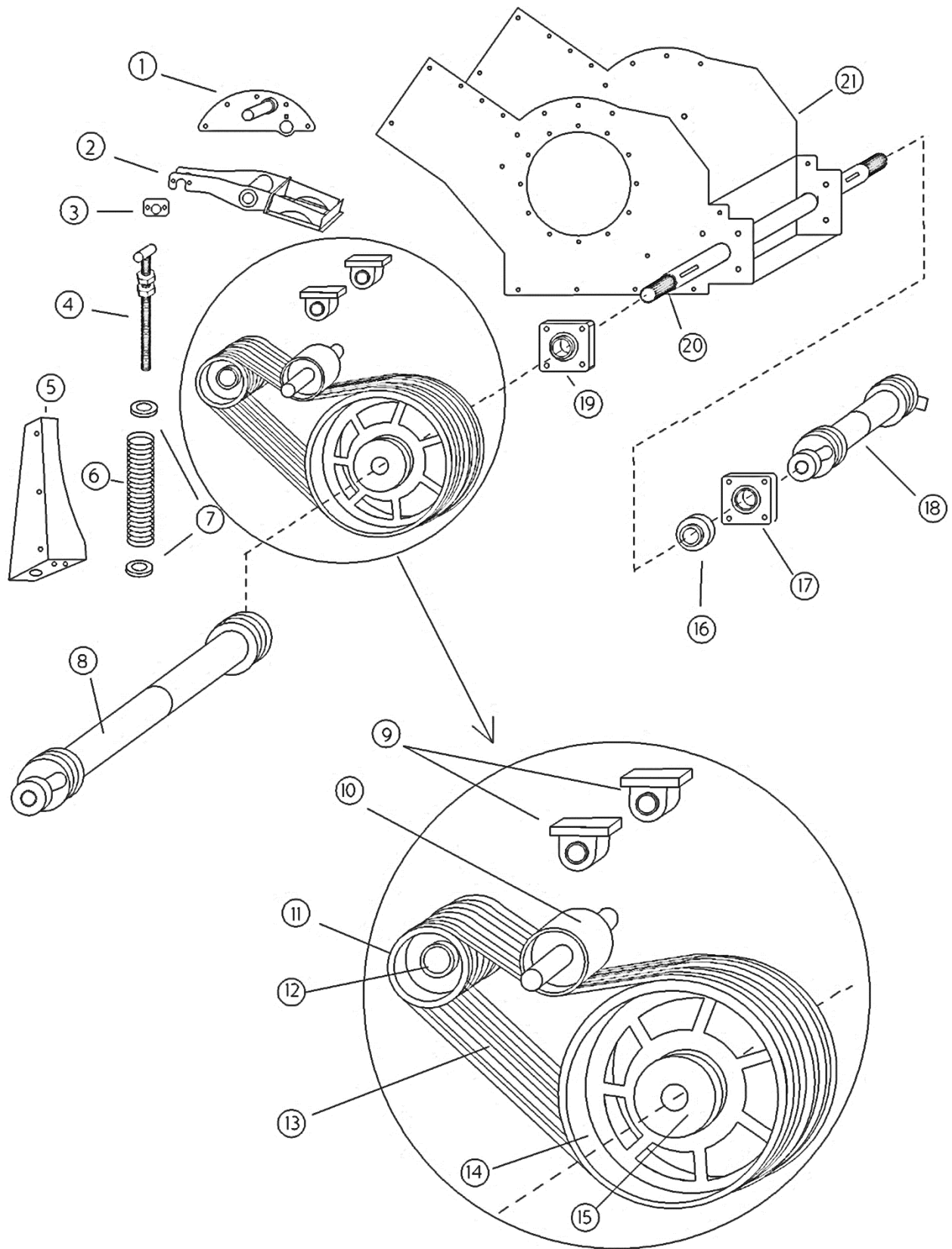
1. 001048 - Self-Adhesive Foam Seal (8' Required)
2. 001003 - 26" Mill Door
3. 001049 - 3/8" X 2" X 7" Square U-Bolt (2 Required)
4. 001028 - Mill Door Latch Cross Pipe (2 Required)
5. 001008 - 26" Mill Door Latch
6. 001012 - 26" Mill Intake Cover
7. 001004 - 26" Mill Top
8. 001009 - 26" Mill Screen Support
9. 001001 - 26" Mill Housing
10. 001014 - 26" Mill Magnet
11. 001010 - 26" Mill Jackshaft Shield
12. 001002 - Mill Front Cover

ILLUSTRATED PARTS LIST - ROTOR



1. 001030 - Slotted Spring Dowell Pin - 1/4" X 1-1/4"
2. 001031 - Hammer (96 Required)
3. 001032 - Wide Hammer Spacer - 0.69" (48 Required)
4. 001033 - Narrow Hammer Spacer - 0.5" (48 Required)
5. 001034 - 26" Hammer Rod
6. 001002 - Mill Front Cover
7. 001011 - Hammer Rod Removal Cover
8. 001035 - Mill Rotor Nut
9. 001036 - 2" Moline 4-Bolt Flange Bearing
10. 001037 - 26" Mill Rotor Shaft
11. 001038 - Mill Rotor Plate (13 Required)
12. 001039 - Mill Rotor Spacer (12 Required)
13. 001040 - 26" Mill Rotor Assembly
14. 001041 - 26" Mill Rotor Assembly with Hammers
15. 001042 - 2" Sealmaster 4-Bolt Flange Bearing with Skwezloc

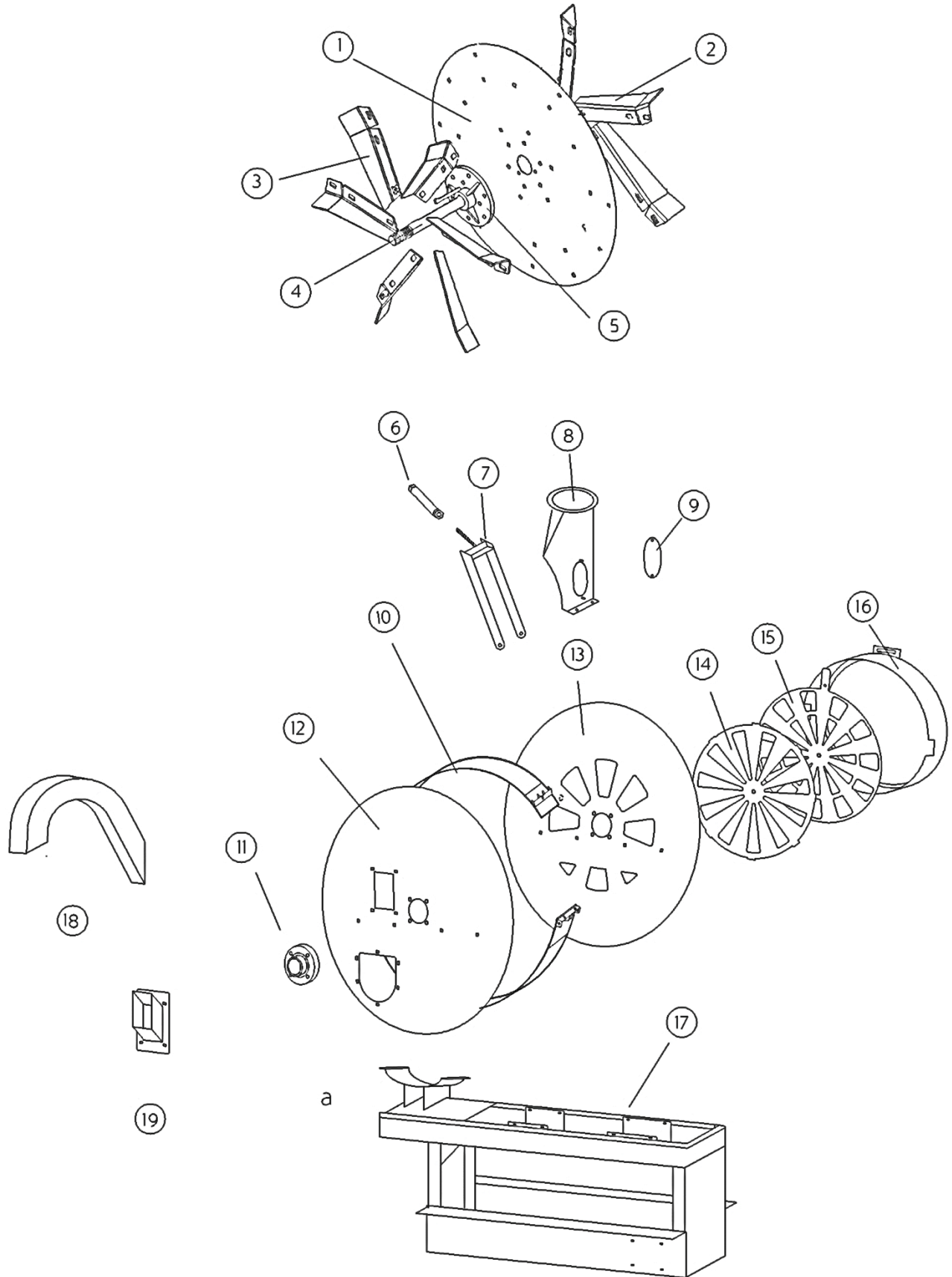
ILLUSTRATED PARTS LIST - HAMMERMILL DRIVES



ILLUSTRATED PARTS LIST - HAMMERMILL DRIVES

1. 001113 - 8-Belt Idler Swivel Bracket
2. 001114 - 8-Belt Idler Frame
3. 001112 - Rod Retainer
4. 001160 - Main Belt Tension Adjustment Rod
5. 001111 - 8-Belt Idler Bracket
6. 001115 - Main Belt Tightener Spring
7. 001110 - Tightener Spring Washer
8. 001161 - 2600 Main PTO (1-3/8" or 1-3/4" 1000 RPM)
9. 001162 - 1-1/4" KML Pillow Block Bearing with Lock Collar
10. 001163 - 8-Belt Idler
11. 001142 - 8-Groove 5V Pulley - 7.1"
12. 001143 - 2" SF Pulley Bushing
13. 001092 - 5VX860 Belt (8 Required)
14. 001141 - 8-Groove 5V Pulley - 21.2"
15. 001139 - 2" J Pulley Bushing
16. 001155 - 1TB38 Pulley with 1-3/4" P1 Pulley Bushing
17. 001042 - 2" Sealmaster 4-Bolt Flange Bearing with Skwezloc
18. 001164 - Blower PTO Shaft
19. 001036 - 2" Moline 4-Bolt Flange Bearing
20. 001165 - 2600 Main Jackshaft
21. 001001 - 26" Mill Housing

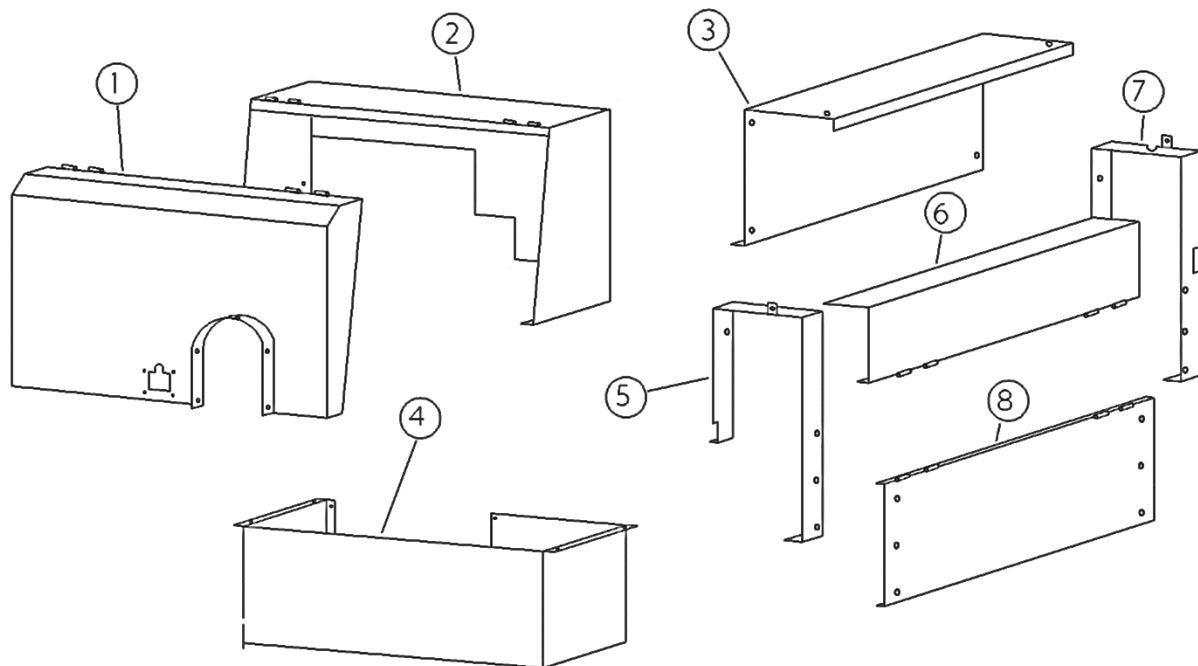
ILLUSTRATED PARTS LIST - BLOWER



ILLUSTRATED PARTS LIST - BLOWER

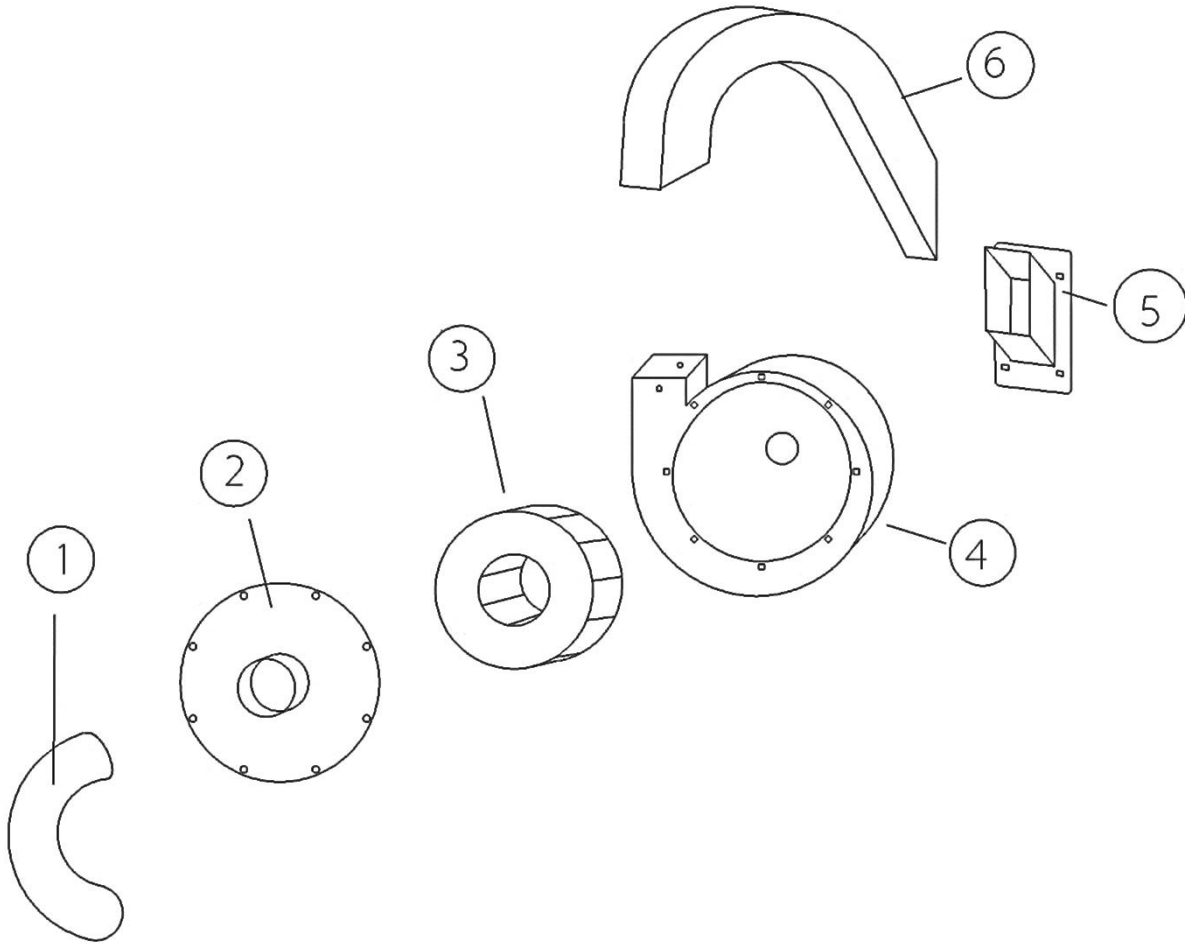
1. 001060 - Blower Center Plate
2. 001061 - Rear Blower Paddle
3. 001062 - Front Blower Paddle
4. 001063 - Blower Shaft
5. 001064 - Blower Hub
6. 001058 - Blower Band Tightener Bolt
7. 001057 - Blower Band Tightener Bracket
8. 001056 - Blower Outlet
9. 001059 - Blower Access Cover
10. 001055 - Blower Band
11. 001070 - 1-3/4" Turner Piloted 4-Bolt Flange Bearing
12. 001071 - Blower Front Sheet
13. 001072 - Blower Rear Sheet
14. 001073 - Blower Air Intake Shield
15. 001074 - Air Intake Flow Control
16. 001075 - Air Intake Cover
17. 001076 - Blower Frame
18. 001108 - Air Gooseneck
19. 001109 - Blower Front Air Intake Fitting

ILLUSTRATED PARTS LIST - SHIELDS



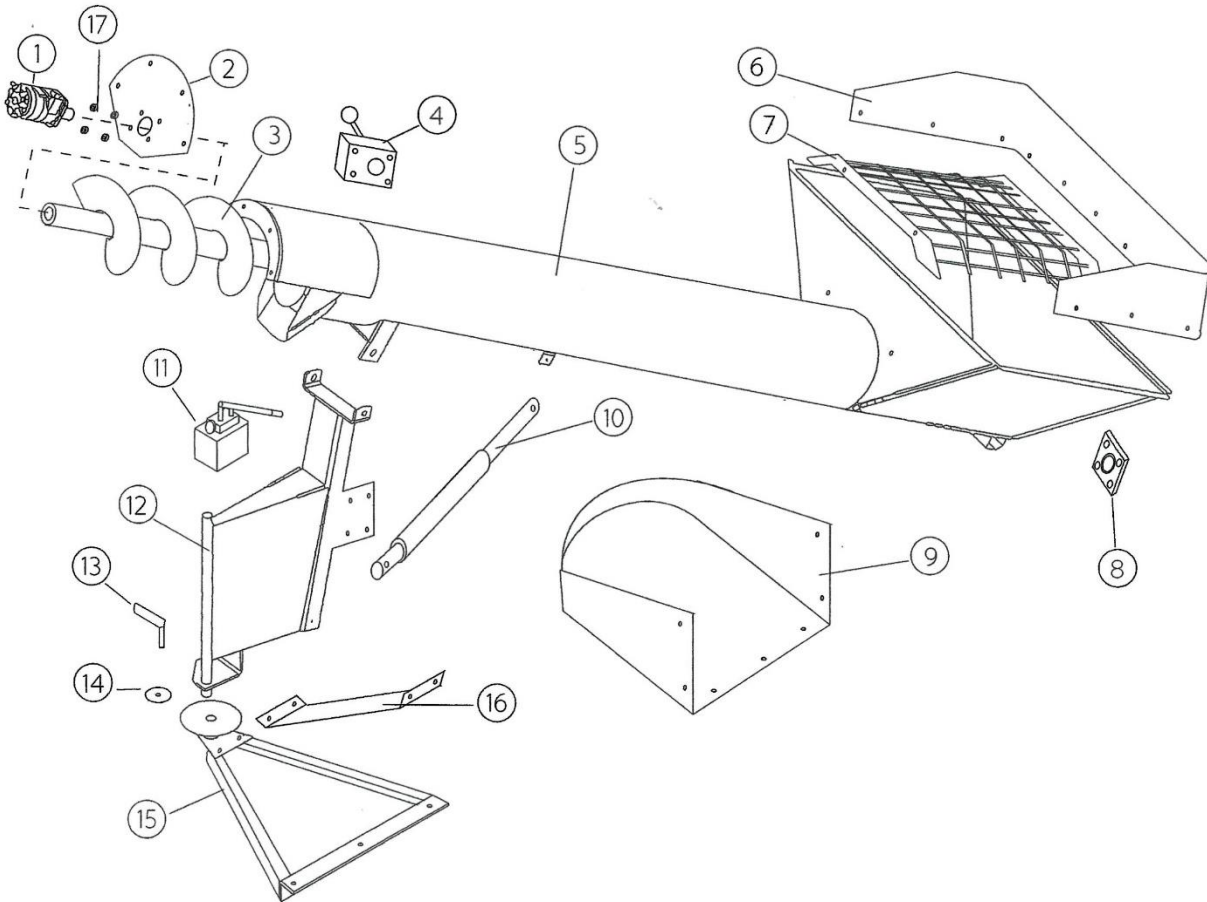
1. 001131 - Main Belt Shield
2. 001130 - Main Belt Shield - Back
3. 001137 - Blower PTO Shield - Back
4. 001132 - Main Belt Shield - Lower
5. 001133 - Blower PTO Shield Front Mount
6. 001135 - Blower PTO Shield
7. 001134 - Blower PTO Shield Rear Mount
8. 001136 - Blower PTO Shield - Lower

ILLUSTRATED PARTS LIST - AIR SYSTEM



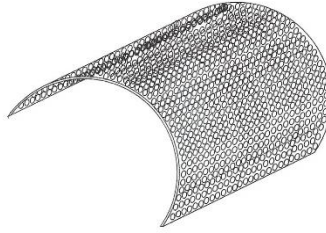
1. 001156 - 4" Silicone 135-Degree Elbow
2. 001013 - Vacuum Fan Cover
3. 001006 - Vacuum Fan
4. 001005 - Vacuum Fan Housing
5. 001108 - Air Gooseneck
6. 001109 - Blower Front Air Intake Fitting

ILLUSTRATED PARTS LIST - LOAD AUGER



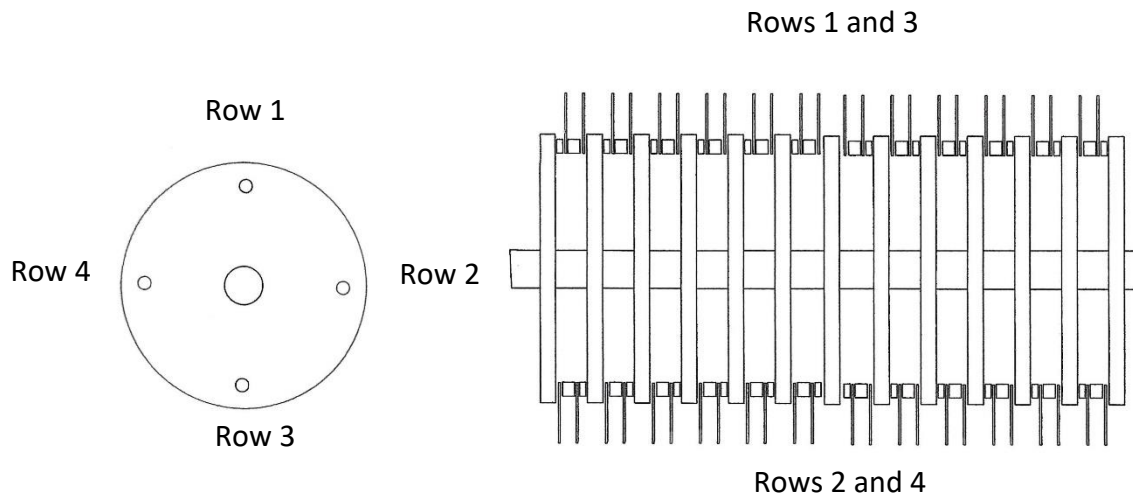
1. 001093 - H-Series Hydraulic Motor - 12.2 CID
2. 001094 - Load Auger End Plate
3. 001095 - Load Auger
4. 001096 - RD 100-Series Hydraulic Flow Controller - 16 GPM
5. 001097 - Load Auger Housing
6. 001081 - 9" Rubber Belting (90" Required)
7. 001106 - Auger Safety Grate
8. 001146 - 1-1/4" KML 4-Bolt Flange Bearing with Lock Collar
9. 001102 - 26" Mill Hopper
10. 001101 - Load Auger Lift Cylinder
11. 001167 - Hydraulic Hand Pump with .8-Gallon Reservoir
12. 001099 - Load Auger Mount Swivel
13. 001104 - 3/8" -16 X 1.18" C-Lever Gibraltar Soft-Touch Knob
14. 001105 - Load Auger Swing Brake
15. 001103 - Load Auger Mount Base
16. 001107 - Load Auger Swivel Brace
17. 001364 - 3/8" Shaft Collar

ILLUSTRATED PARTS LIST - SCREENS



- 001171 - 26" Screen, 1/8" Hole Size, 11GA Material
- 001172 - 26" Screen, 3/16" Hole Size, 11GA Material
- 001173 - 26" Screen, 1/4" Hole Size, 3/16" Material
- 001174 - 26" Screen, 5/16" Hole Size, 3/16" Material
- 001175 - 26" Screen, 3/8" Hole Size, 3/16" Material
- 001176 - 26" Screen, 7/16" Hole Size, 3/16" Material
- 001177 - 26" Screen, 1/2" Hole Size, 3/16" Material
- 001178 - 26" Screen, 5/8" Hole Size, 3/16" Material
- 001179 - 26" Screen, 3/4" Hole Size, 3/16" Material

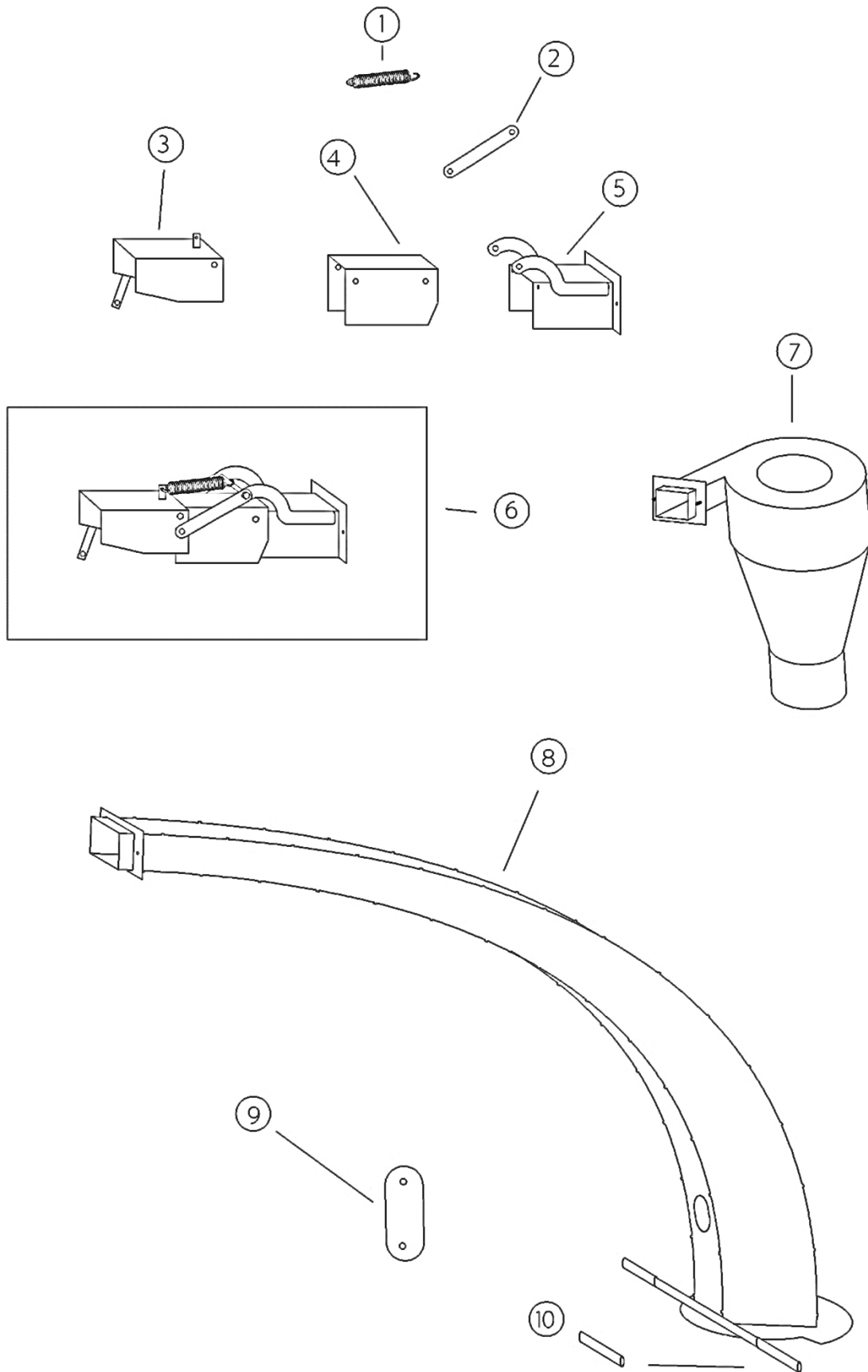
Rotor Hammer Spacing Diagram



Alternate wide and narrow spacers and hammers as shown.

Note: Pattern changes after rotor plate 7.

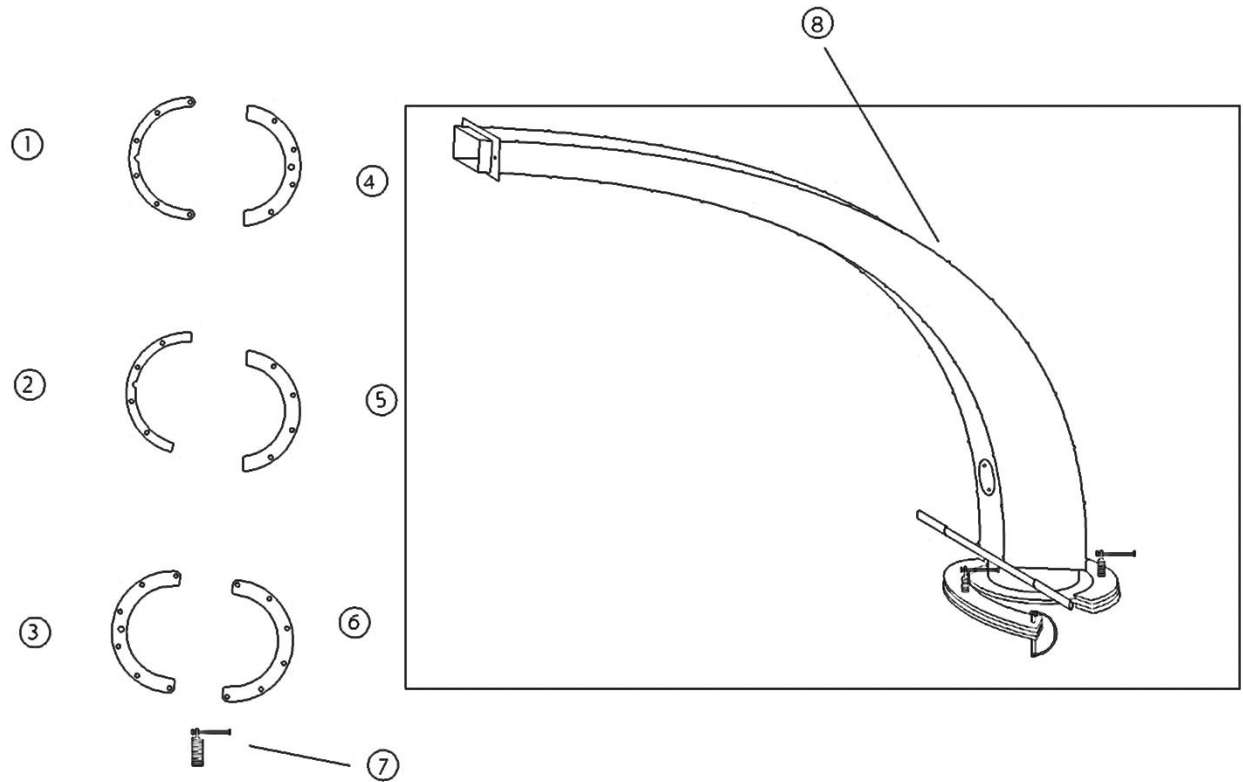
ILLUSTRATED PARTS LIST - DISCHARGE ATTACHMENTS



ILLUSTRATED PARTS LIST - DISCHARGE ATTACHMENTS

1. 001043 - Spring - 3/4" X 3-3/4" X 0.15"
2. 001020 - Flipper Hinge Strap
3. 001019 - Flipper (Discharge End)
4. 001018 - Flipper (Middle)
5. 001017 - Flipper (Mount End)
6. 001044 - Flipper Attachment Assembly
7. 001016 - Cyclone Attachment
8. 001015 - Gooseneck
9. 001021 - Gooseneck Clean-Out Cover
10. 001045 - 5-1/8" Textured Round Protective Grip

ILLUSTRATED PARTS LIST - GOOSENECK



1. 001023 - Gooseneck Clamp (Middle Back)
2. 001026 - Gooseneck Clamp (Middle Front)
3. 001027 - Gooseneck Clamp (Top Front)
4. 001024 - Gooseneck Clamp (Top Back)
5. 001022 - Gooseneck Clamp (Bottom Back)
6. 001025 - Gooseneck Clamp (Bottom Front)
7. 001046 - Gooseneck Turn Brake
8. 001047 - Gooseneck Attachment Assembly

Exceed Manufacturing LLC

“Built to Exceed Your Expectations”

**102 Clubhouse Rd
Woodbury PA 16695**

Phone - (814) 766-2092